

Mail Pouch Barns & General Stores *Driving Tour*

Greene County, Pennsylvania



Greene County Tourist
Promotion Agency

417 E. Roy Furman Hwy.
Waynesburg, PA 15370

724-627-TOUR

greencountytourism.org





Chew Mail Pouch Tobacco

Table of Contents

- 1 Mail
Pouch
Barns
History
- 2 Mail
Pouch
Barns
Tour
- 10 County
Map
- 12 General
Stores
History
- 13 General
Stores
Tour

Welcome to the second Greene County driving tour! In our first tour, we explored covered bridges found throughout our countryside and in Washington County. The tour booklet you have now is two-fold; it includes a tour featuring Mail Pouch Barns and one focusing on general stores.

The first section of the tour will lead you through farm landscapes where Mail Pouch barns still stand for visitors to admire the beauty of old tradition. The second tour will lead you through our small, rural towns where the earliest general stores still operate and serve locals and visitors.

Since the earliest development of our southwestern corner of Pennsylvania, land has been an important asset to the survival of the people who settled here. Resources like coal and natural gas have provided jobs and sustained the development of the surrounding region. In addition, hunting and farming have played important roles in the connection between the people and the land, creating a need for a supply store to support the towns. Thus, the general store was born.

Growing businesses needed advertising to expand. The Bloch Brothers Tobacco Company was one such enterprise. The Bloch Brothers were instrumental in developing a new form of advertising—outdoor advertising. By promoting their Mail Pouch brand through advertisements painted on roadside barns, they gained exposure while enabling farmers to benefit through various types of compensation.

While most of the country is headed towards urban sprawl and new land development, Greene County has preserved the authenticity of its culture and landscape over the last century. For this reason, there are many worthwhile sites to visit. The local communities have a rare appreciation for preserving their heritage. And that, perhaps, may be the reason that signs of such preservation are common throughout the region.

The Greene County Mail Pouch Barns/General Stores Driving Tour looks at both history and local culture and how the community still values them to this day.

Mail Pouch Barns History

It was at the turn of the 20th century when the Bloch Brothers Tobacco Company of Wheeling, West Virginia embraced their new slogan, "Chew Mail Pouch Tobacco – Treat Yourself to the Best". The new slogan was painted on private barns along those routes heavily traveled by farmers. These would become known as "Mail Pouch Barns".

Color and location played an important role in the design of Mail Pouch barns as a marketing strategy to gain attention. Traditional Mail Pouch colors are red or black with yellow and white lettering. Some less traditional colors found on the barns are brown, gray and brick. No matter the color of the background, the barns were "trimmed" in blue where the initials of the painter and the date were marked. All four sides of the barns would be painted. The side(s) facing the highways would have the Mail Pouch advertisement. Those sides not facing the highway would be the painted the desired color of the farmer. The location of the barns and the colors used were meant to attract the eyes of those passing by.

A friend of Greene County who painted numerous barns in the area, Harley Warrick, of Belmont, Ohio, joined the Mail Pouch crew while witnessing the painting of his own barn. He is given credit for painting and/or touching up Mail Pouch barns nearly 20,000 times. He claimed to have painted barns in every kind of weather with

an average time of six hours per barn. You can learn more about Harley Warrick by reading *The Barn Painter*, written by Harley and his son, Roger. Email Roger at roger.warrick@gmail.com for more information on obtaining a

Treat Yourself to the Best

copy of the book.

Unfortunately, the Bloch Brothers Tobacco Company's painting of roadside advertisements would be short lived. Lady Bird Johnson (First Lady to President Lyndon Johnson) believed that the beautification of the planet would increase society's mental health. President Johnson agreed, and in 1969, the Federal Highway Beautification Act put a stop to additional Mail Pouch paintings, prohibiting advertising within 660 feet of any federally funded highways. However, those advertisements that were already in place were not affected by the legislation.

The barns were well cared for in that the Bloch Brothers Tobacco Company completed repairs and repainted the barns at no charge. It has been noted that barns in locations closer to the tobacco company's headquarters in West Virginia stand in better condition than those farther away. It is estimated that around 20,000 barns were painted with the Mail Pouch insignia; however less than 2,000 remain today.

Mail Pouch Barns Driving Tour

A. Badali Property

Waynesburg, PA



B. Cain Property

Mt. Morris, PA



C. Ealy Family/ Consol Property

Wind Ridge, PA



D. Fox Property

Sugar Grove, PA



E. Kennedy Property

New Freeport, PA



F. Lapping Property

Waynesburg, PA

Mail Pouch Barns Driving Tour

Route 19, north of Waynesburg by about 2 miles.
Coming from Waynesburg, barn will be on the left.
Latitude: N39 55.66 • Longitude: W80 11.94

Route 19, south of Route 21 intersection by 11 miles.
Coming from Waynesburg, barn will be on the left.
Latitude: N39 48.07 • Longitude: W80 06.95

Route 21, near Wind Ridge.
Coming from Waynesburg, barn will be on the left.
Latitude and Longitude not Available

Route 88, south of Route 21 by 2 miles
Coming from Waynesburg, barn will be on the right.
Latitude: N39 50.10 • Longitude: W79 57.93

Route 18, 2 miles north of New Freeport.
Coming from Waynesburg, barn will be on the right.
Latitude and Longitude not Available

Route 19, south of Route 21 intersection by 1 mile.
Coming from Waynesburg, barn will be on the left.
Latitude: N39 53.12 • Longitude: W80 09.69

Mail Pouch Barns Driving Tour

G. Eisiminger Property Waynesburg, PA



H. Reda Property Khedive, PA



I. Shipman Property Ruff Creek, PA



J. Thistle Property Rogersville, PA



K. Vandruff Property Kirby, PA



L. Vitolo Property Holbrook, PA

Mail Pouch Barns Driving Tour

Route 19, south of Route 21 intersection by 6 miles.
Coming from Waynesburg, barn will be on the right.
Latitude: N39 49.87 • Longitude: W80 07.43

Route 21, east of I-79 by 7.3 miles.
Coming from Waynesburg, barn will be on the right.
Latitude: N39 52.66 • Longitude: W80 01.09

Route 19, north of Waynesburg.
Coming from Waynesburg, barn will be on the left.
Latitude and Longitude not Available

Route 21, north of Route 18 by 0.1 mile.
Coming from Waynesburg, barn will be on the right.
Latitude: N39 52.63 • Longitude: W80 16.99

Route 19, south of Route 21 intersection by 8 miles.
Coming from Waynesburg, barn will be on the left.
Latitude: N39 45.58 • Longitude: W80 04.99

Route 18 S., 1.5 miles south of the intersection of Routes 18 and 21.
Coming from Waynesburg, barn will be on the left.
Latitude: N39 46.40 • Longitude: W80 24.14

Mail Pouch Barns Driving Tour

Other Mail Pouch Sites of Interest:

Gallatin Property

Carmichaels, PA



Downtown Cameron

Cameron, WV



Cameron, WV

Cameron, WV



Washington County

Washington County, PA



Mail Pouch Barns Driving Tour

Shed on Betty Blvd. in Carmichaels
Painted by Harley Warrick
Latitude and Longitude not Available

Just across from Cameron Pharmacy

Rt. 250, just east of Cameron, WV

There are numerous barns throughout the county. Contact the Washington County Tourism Promotion Agency at www.visitwashingtoncountypa.com for more information.

Mail Pouch Barns Driving Tour



Mail Pouch Barns Driving Tour

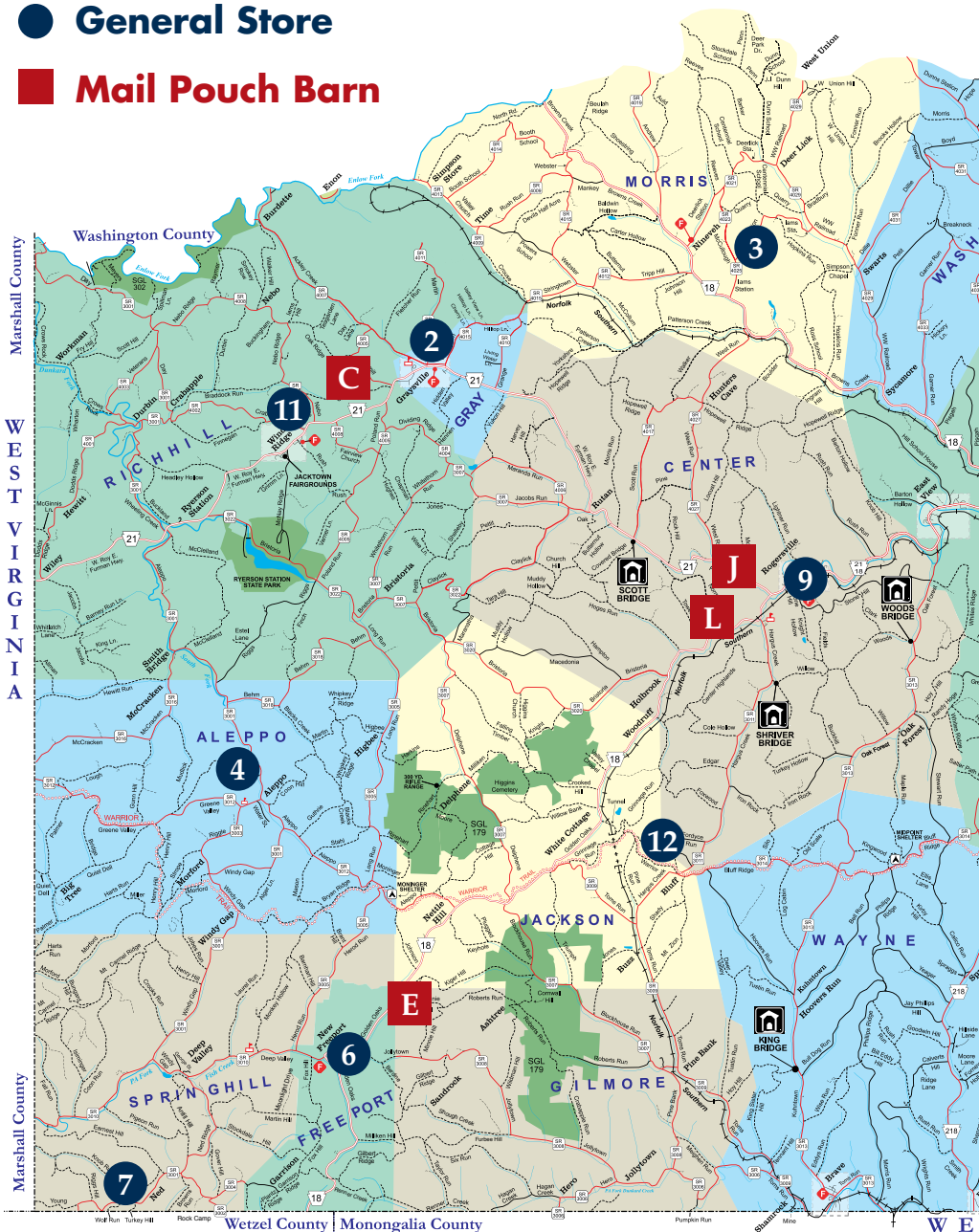
- Owners of the Bloch Brothers Tobacco Company, Aaron and Samuel Bloch were the entrepreneurs of outdoor advertising.
- Compensation for the farmers for allowing their barns to be painted included free tobacco, \$1 to \$2 annually, free fresh coats of paint, or magazine subscriptions.
- The Mail Pouch brand consists of stogie wrapper clippings used as chewing tobacco.
- Harley Warrick, who passed away in 2000, painted barns for 55 years. He kept painting Mail Pouch insignia despite the Highway Beautification Act.
- Mail Pouch Barns needed to be touched up every 4 to 5 years.
- Some Mail Pouch Barns are now National Historic Landmarks.
- Harley Warrick appeared on Good Morning America in 1982.
- The last Mail Pouch Barn Harley painted was in Barkcamp State Park in Belmont, Ohio on October 2, 2000.

Interesting Facts

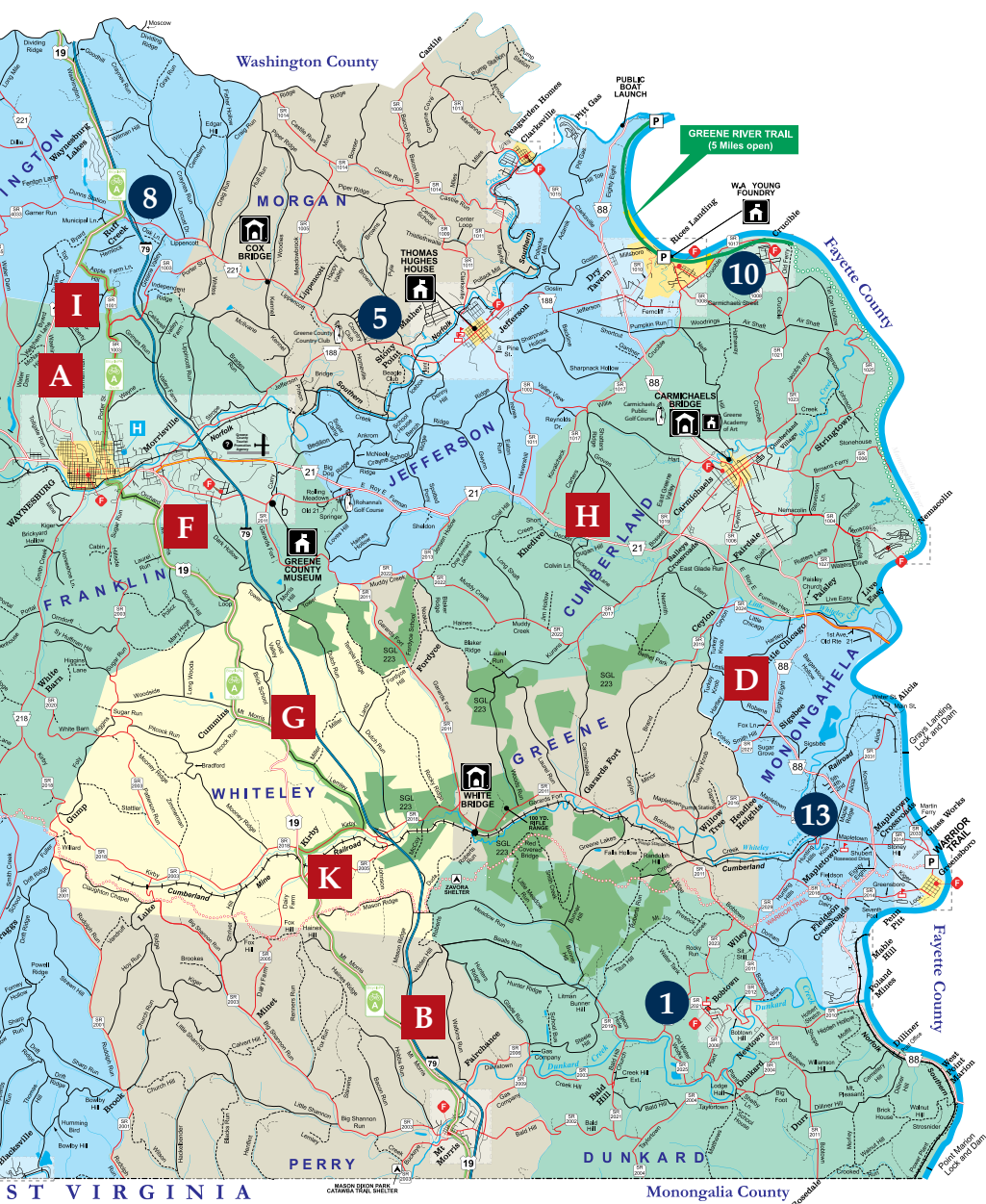
Greene County,

● General Store

■ Mail Pouch Barn



Pennsylvania



General Stores History

A general store is defined as "a store which sells a large variety of useful things, without specializing highly in any particular type of merchandise, and which

The Original One-Stop Shop

is not departmentalized". General stores, also known as country stores, mercantiles and emporiums, were a place where townspeople could purchase needed merchandise without having to travel long distances.

In the United States, departmentalized stores such as Wal-Mart began 'replacing' general stores as they carried more merchandise in specific categories. General stores became more sparse beginning in the 1960s due to these departmentalized retailers. General stores are still popular in smaller communities but they are more commonly known as convenience stores.

General stores were more than grocery peddlers. They also traded crops for animal feed, provided postal services, and participated in community banking services. General stores sold merchandise ranging from grocery items, hardware,

automotive needs, fuel and diesel, clothing, prepared meals, gift items and much more. Services were also provided along with the banking and postal services including automotive services, notary services, and others.

The general store was, and still is, a place for townspeople to gather in fellowship. Most general stores offered customers a place to sit and dine where many visitors could build relationships with one another. The stores' potbelly stoves, checkerboards, and pickle barrels attracted people to gather to talk, play games and pass the time. These "hangouts" were places for the townspeople to enjoy each others company and gossip.

In order to remain profitable and operable, general store owners need to adapt their merchandise to the ever changing times. Feed is no longer one of the top selling items at general stores because fewer people depend on farming to support their families. Actually, few general stores still stock farm feed because of the decreasing demand.

While general stores are fading from the picture in the United States, 14 stores still exist in Greene County, Pennsylvania. Some old, some newer, the general stores of Greene County enable their customers to experience what it is like to shop with a retailer who cares about your personal needs and desires.

General Stores Driving Tour



1. Bobtown Market

Baldhill Church Road and Bobtown Hill Road
Bobtown, Pennsylvania 15315
(724) 839-7541

Hours of Operation:

Sunday - CLOSED
Monday - 8:00 AM to 8:00 PM
Tuesday - 8:00 AM to 8:00 PM
Wednesday - 8:00 AM to 8:00 PM
Thursday - 8:00 AM to 8:00 PM
Friday - 8:00 AM to 8:00 PM
Saturday - 8:00 AM to 8:00 PM

Description: Bobtown Market originated in a Company Store across the street from its current location in 1985. The current store was built to accommodate the business in 1995. Owned by Sam Cossick, Bobtown Market sells over 100 different cold drinks especially popular among area bicyclists.

Offers: 100 different cold drinks, deli, ice cream, Slush Puppies, general grocery and much more!!



*Two Rivers Marina & Campground & Restaurant:
2866 S. 88 Rd., Dilliner, PA 15327*

General Stores Driving Tour



2. Graysville General Store

169 Main Street
Graysville, Pennsylvania 15337
(724) 428-4020

Hours of Operation:

Sunday - 8:00 AM to 8:00 PM
Monday - 6:00 AM to 10:00 PM
Tuesday - 6:00 AM to 10:00 PM
Wednesday - 6:00 AM to 10:00 PM
Thursday - 6:00 AM to 10:00 PM
Friday - 6:00 AM to 10:00 PM
Saturday - 6:00 AM to 10:00 PM

Description: Originally known as Hayes General Store dating back to 1817, Graysville General Store is currently owned by Dave Cipoletti. The store features original wooden flooring with an outdoor ambiance. Several top shelf antiques are complemented with the hunting trophies throughout the store.

Offers: deli sandwiches, ATM, gas and diesel fuel, hardware, boots, shirts, hats, rain suits, hunting gear, movie rentals, general groceries and much more!!



Creekside Kitchen:
1120 W. Roy Furman Hwy., Graysville, PA 15337

General Stores Driving Tour



3. Hopkins General Store

1751 Browns Creek Road
Nineveh, Pennsylvania 15353
(724) 428-3958

Hours of Operation:

Sunday - 4:00 PM to 7:00 PM
Monday - 7:00 AM to 7:00 PM
Tuesday - 7:00 AM to 7:00 PM
Wednesday - 7:00 AM to 7:00 PM
Thursday - 7:00 AM to 7:00 PM
Friday - 7:00 AM to 7:00 PM
Saturday - 7:00 AM to 7:00 PM

Description: Originally built in 1943, the Hopkins General Store is a family-owned and operated general store that has been in the Hopkins Family since 1945. Currently owned by Sam and Dottie Hopkins the store is reminiscent of the good ole' days with a pot belly stove.

Offers: snacks, beverages, ATM, movie rentals, books, feed, hardware, hand-dipped ice cream, hot dogs, general groceries, craft room and much more!!



*Lunch at Waynesburg Livestock Auction (Thursday only):
566 W. High St., Waynesburg, PA 15370*

General Stores Driving Tour



4. Jordan's General Store

1173 Aleppo Road
Aleppo, Pennsylvania 15310
(724) 428-5155

Hours of Operation:

Sunday - 11:00 AM to 4:00 PM
Monday - 7:30 AM to 6:00 PM
Tuesday - 7:30 AM to 6:00 PM
Wednesday - 7:30 AM to 6:00 PM
Thursday - 7:30 AM to 6:00 PM
Friday - 7:30 AM to 6:00 PM
Saturday - 8:00 AM to 6:00 PM

Description: The original general store, owned and operated by Blanche Hinerman, burnt to the ground in the 1920s and was rebuilt as Jordan's General Store. Boasting an original tin ceiling, Jordan's is currently owned by Louis, Bonni, and Teri Jordan and was previously home to a post office and pool hall.

Offers: snacks, beverages, animal feed, antiques, deli meats and cheeses, canned goods, household cleaners and supplies, automotive supplies, general groceries and much more!!



Lee Ann's:
309 W. Roy Furman Hwy., Wind Ridge, PA 15380

General Stores Driving Tour



5. The Lit'l Store

1004 Jefferson Road
Waynesburg, Pennsylvania 15370
(724) 883-3678

Hours of Operation:

Sunday - CLOSED
Monday - 6:00 AM to 7:00 PM
Tuesday - 6:00 AM to 7:00 PM
Wednesday - 6:00 AM to 7:00 PM
Thursday - 6:00 AM to 7:00 PM
Friday - 6:00 AM to 7:00 PM
Saturday - 6:00 AM to 7:00 PM

Description: The Lit'l Store is unique because it was built using materials from the old Mather School in the 1950s. Owned by Jeannie Pierce Waychoff, the Lit'l Store was previously known as Butler's Market and 77 Market.

Offers: deli specials, breakfast specials, hoagies, stromboli's, gift items, U-Haul services, general grocery items and much more!!



*Tom & Amy's at the Greene County Country Club:
1044 Lippencott Rd., Waynesburg, PA 15370*

General Stores Driving Tour



6. The Log Cabin

735 Golden Oaks Road
New Freeport, Pennsylvania 15352
(724) 447-2771

Hours of Operation:

Sunday - 8:00 AM to 5:00 PM
Monday - 6:00 AM to 8:30 PM
Tuesday - 6:00 AM to 8:30 PM
Wednesday - 6:00 AM to 8:30 PM
Thursday - 6:00 AM to 5:30 PM
Friday - 6:00 AM to 8:30 PM
Saturday - 6:00 AM to 8:30 PM

Description: The Log Cabin General Store is an original log structure around which a general store was built. The original exterior cabin walls are within the store where patrons can enjoy their time socializing. Owned by Steve and Debbie Robbins, The Log Cabin keeps getting bigger with new additions.

Offers: breakfast sandwiches, Hunt Brothers Pizza and Deli, wraps and subs, Sunday specials, general groceries and much more!!

General Stores Driving Tour



7. Ned General Store

612 Ned Ridge Road
New Freeport, Pennsylvania 15352
(724) 447-2821

Hours of Operation:

Sunday - CLOSED
Monday - 11:30 AM to 5:00 PM
Tuesday - CLOSED
Wednesday - 11:30 AM to 5:00 PM
Thursday - 11:30 AM to 5:00 PM
Friday - 11:30 AM to 5:00 PM
Saturday - 11:30 AM to 5:00 PM

Description: This store has been family owned since it began operating. Francis "Ned" Barger is the influencer behind Ned General Store that was built in 1897 as a Post Office. The building suffered fire damage in 1910 and was rebuilt in 1913 as Ned General Store. The store has its original tin ceiling, wooden floors, an original Coca-Cola cooler and a potbelly stove. As it used to serve as the Post Office, Ned General Store also still features the original mailboxes.

Offers: ice-cold beverages, canned goods, hardware, baking goods, homemade foods, feed. At Christmastime, they offer sleigh rides with Santa, cookies, decorations and much more!!

General Stores Driving Tour



8. Ruff Creek General Store

720 Washington Road
Ruff Creek, Pennsylvania 15329
(724) 627-9122

Hours of Operation:

Sunday - 10:00 AM to 5:00 PM
Monday - 7:00 AM to 7:00 PM
Tuesday - 7:00 AM to 7:00 PM
Wednesday - 7:00 AM to 7:00 PM
Thursday - 7:00 AM to 7:00 PM
Friday - 7:00 AM to 7:00 PM
Saturday - 7:00 AM to 7:00 PM

Description: Built in 1925, Ruff Creek General Store is the oldest continuously operating general store in southwestern Pennsylvania. It is currently owned by Raymond Stockdale who has been with the store for over 50 years. The store features wooden floors and the original store countertop.

Offers: deli sandwiches, salads, pickled eggs, dog licensing, live fish bait, feed, ATM, USPS mailbox, fuel, vehicle supplies, boots, video rentals and much more!!



Hot Rod's House of BAR-B-QUE: 68 S. Washington, Waynesburg, PA 15370

General Stores Driving Tour



9. Rush Grocery and Video

3267 West Roy Furman Highway
Rogersville, Pennsylvania 15359
(724) 499-5980

Hours of Operation:

Sunday - 8:00 AM to 10:00 PM
Monday - 6:00 AM to 10:00 PM
Tuesday - 6:00 AM to 10:00 PM
Wednesday - 6:00 AM to 10:00 PM
Thursday - 6:00 AM to 10:00 PM
Friday - 6:00 AM to 10:00 PM
Saturday - 8:00 AM to 10:00 PM

Description: Rush Grocery and Video has been owned by Gene and Judy Rush for about 15 years. The store offers diner seating amidst a fire place in a quiet corner where the most popular meal is white chicken pizza. Attached is Riley's Barbershop.

Offers: Sub Express Deli, pizza, ice cream, snacks, beverages, movie rentals, general groceries and much more!!

General Stores Driving Tour



10. Stan Lee's

1021 First Street
Crucible, Pennsylvania 15325
(724) 592-5433

Hours of Operation:

Sunday - 10:00 AM to 3:00 PM
Monday - 7:00 AM to 6:00 PM
Tuesday - 7:00 AM to 6:00 PM
Wednesday - 7:00 AM to 6:00 PM
Thursday - 7:00 AM to 6:00 PM
Friday - 7:00 AM to 6:00 PM
Saturday - 8:00 AM to 5:00 PM

Description: Stan Lee's is currently owned by Holly and Dino Palone and was originally opened in 1952 by Stan and Leona as the first convenience store in Crucible. The building was restored in 2004 and boasts the original red tin ceiling.

Offers: hoagies, hot dogs, chili dogs, hand-dipped ice cream, milkshakes, general groceries, beverages and much more!!



Chuckwagon Café:
312 S. Pine St., Carmichaels, PA 15320

General Stores Driving Tour



11. Stoke's General Store

479 West Roy Furman Highway
Wind Ridge, Pennsylvania 15380
(724) 428-4359

Hours of Operation:

Sunday - 9:30 AM to 3:00 PM
Monday - 6:00 AM to 7:00 PM
Tuesday - 6:00 AM to 7:00 PM
Wednesday - 6:00 AM to 7:00 PM
Thursday - 6:00 AM to 7:00 PM
Friday - 6:00 AM to 7:00 PM
Saturday - 6:00 AM to 7:00 PM

Description: Stoke's General Store is family owned and operated by Paul and Amy Stokes. It is located in a structure built from part of the old Richhill Township High School. Notary services and a hair salon are present in the store along with just about everything one could need! The cold meatloaf sandwich is a must try.

Offers: gas, clothing/gloves, snacks, general groceries, household cleaners and supplies, hardware and tools, baby needs, beverages, notary services, computer parts and services, plumbing needs, gift items and deli sandwiches.



Lee Ann's:
309 W. Roy Furman Hwy., Wind Ridge, PA 15380

—or—



Creekside Kitchen:
1120 W. Roy Furman Hwy., Graysville, PA 15337

General Stores Driving Tour



12. Warrior Trail General Store

294 Warrior Road
Holbrook, Pennsylvania 15470
(724) 499-5801

Hours of Operation:

Sunday - 7:00 AM to 8:00 PM
Monday - 7:00 AM to 8:00 PM
Tuesday - 7:00 AM to 8:00 PM
Wednesday - 7:00 AM to 8:00 PM
Thursday - 7:00 AM to 8:00 PM
Friday - 7:00 AM to 8:00 PM
Saturday - 7:00 AM to 8:00 PM

Description: Currently owned by Arlene Miller, the Warrior Trail General Store is the newest general store in Greene County. The general store also houses a tire shop and garage.

Offers: sandwiches, hoagies, stromboli's, beverages, soups, pizza, general groceries, feed and much more!!

General Stores Driving Tour



13. Watson's General Store

941 Mapletown Road
Greensboro, Pennsylvania 15338
(724) 943-3237

Hours of Operation:

Sunday - CLOSED
Monday - 7:30 AM to 5:30 PM
Tuesday - 7:30 AM to 5:30 PM
Wednesday - 7:30 AM to 5:30 PM
Thursday - 7:30 AM to 5:30 PM
Friday - 7:30 AM to 5:30 PM
Saturday - 7:30 AM to 5:30 PM

Description: Watson's General Store was originally built in 1920 by the Clevenger family and is currently owned by Bob Watson who acquired the store from his father in 1961. The store boasts the original wood flooring and tin ceiling along with many antiques.

Offers: cold drinks, snacks, general grocery items, deli sandwiches and more!!



The Ice Plant Restaurant:
342 Stoney Hill Rd., Greensboro, PA 15338

General Stores Driving Tour



General Stores Driving Tour

- General stores were usually the first retail establishment built in a town. Townspeople bought almost everything they needed for their house at the general store.
- The storeowner needed to maximize the available space in the store in order to display goods as well as hold inventory. Windows were sacrificed for shelving, and items were stacked on the floor in the middle of the store, piled on counters, stacked onto shelves and hung from ceiling hooks.
- Storeowners purchased items like coffee, flour, sugar, crackers, spices, pickles, vinegar, molasses and kerosene in bulk quantities and measured the desired amount into jugs and bags for customers.
- Larger items such as farm equipment, sewing machines and cook stoves were special ordered by the storeowner for the customer.
- In the 1800s town post offices were often located in the general stores. Townspeople and farmers each had a mailbox inside the general store to receive letters.

Interesting Facts



Come Back Soon!



Thank you for participating in the Greene County Mail Pouch Barns/General Stores Driving Tour. We hope you enjoyed the combination of local history, culture and tradition that our county has to offer.

We want to extend a thank you to our spring intern Jonathan Byers and, especially, to our spring/summer intern Nicki DesChamps for all of her hard work on this project.

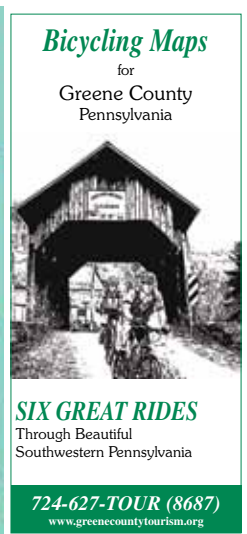
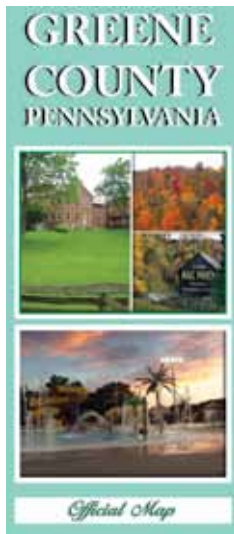
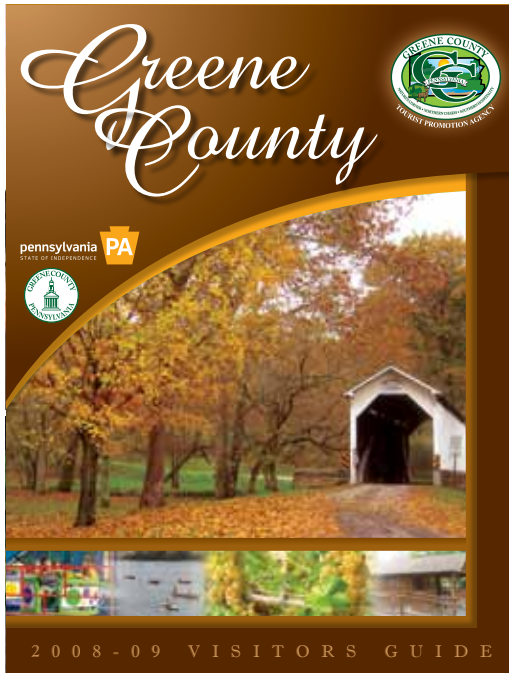
If you enjoyed this tour, please stop by the Tourism Office and browse through our selection of driving tours. We currently offer a Washington & Greene Counties Covered Bridges Driving Tour. Coming soon will be a driving tour with barns that feature painted quilt squares.

In addition to driving tours, the Tourism Office offers brochures on numerous attractions and things to do in Greene County. Choose from bicycle maps, hunting and fishing guides, agritourism destinations, information on places to stay and listings of events in the area, to name a few.

Come and experience everything Greene County has to offer. For more information, visit www.greenecountytourism.org or call 724-627-8687. *Hope to see you soon!*



Other Brochures Available





Greene County Tourist
Promotion Agency

417 E. Roy Furman Hwy.
Waynesburg, PA 15370

724-627-TOUR

greenecountytourism.org

